

ELECTROSTATIC SPRAYING

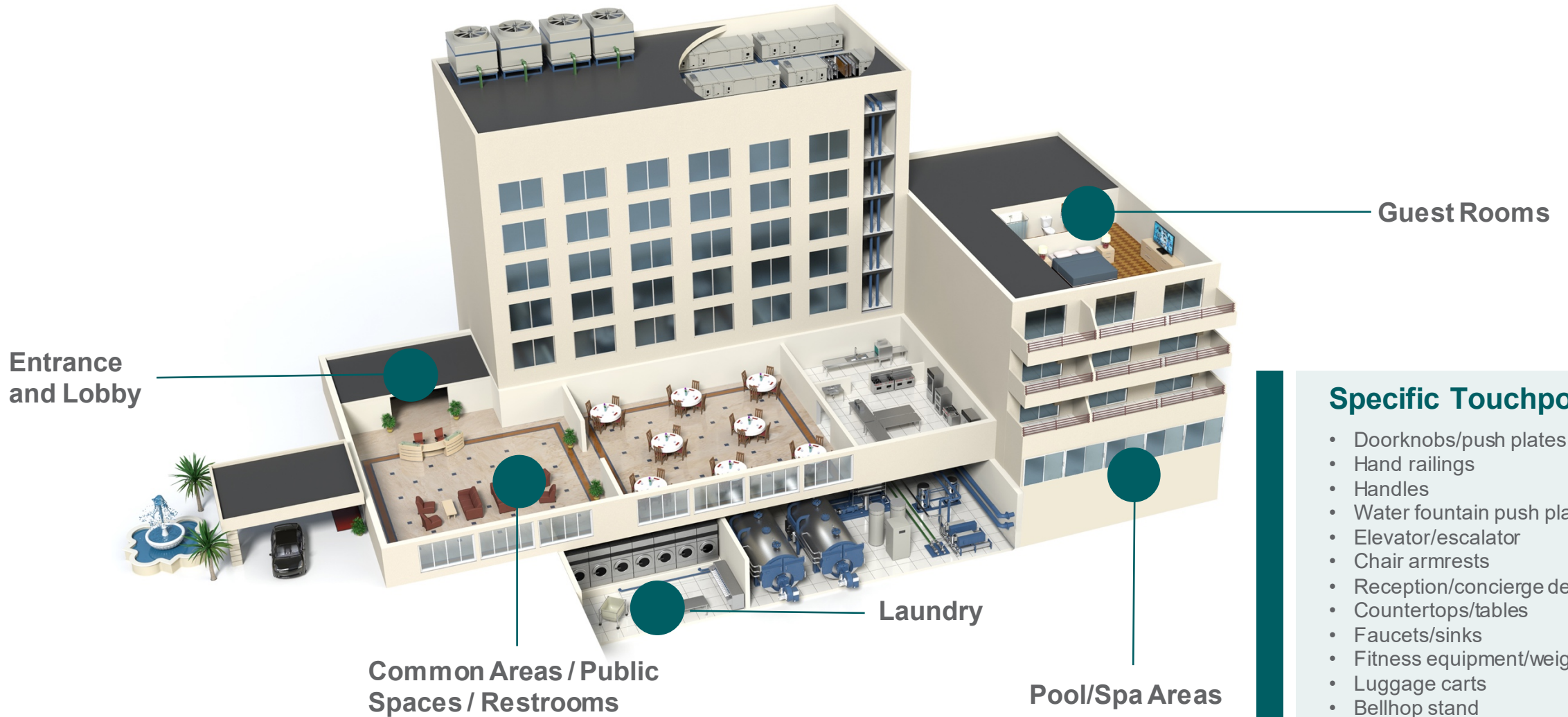
Cleaning and disinfection guidance for
the use of electrostatic sprayers
in hospitality



ELECTROSTATIC SPRAYING IN HOSPITALITY



NOTE: Assess your location to determine where electrostatic spraying may be most beneficial and effective prior to application. Consider material compatibility and sensitive surfaces.



Specific Touchpoints

- Doorknobs/push plates
- Hand railings
- Handles
- Water fountain push plates
- Elevator/escalator
- Chair armrests
- Reception/concierge desks
- Countertops/tables
- Faucets/sinks
- Fitness equipment/weights
- Luggage carts
- Bellhop stand

GUIDELINES FOR USE



Set-up of Unit

- Ensure battery is fully charged
- Fill and label chemical reservoir
- Ensure reservoir is secured to unit
- Set device to droplet size of 40 microns or larger (if adjustable)
- Turn electrostatic mode to 'on' (if applicable)
- Unlock trigger
- Firmly wrap hand around ground before initiating spray

Storage of Unit

- Remove reservoir and triple rinse with fresh water
- Spray fresh water through unit to rinse inside lines
- Lock trigger
- Turn unit 'off'
- Remove battery and store on charger
- If chemistry remains in reservoir, store labeled and capped

GUIDELINES FOR USE



DO'S For Electrostatic Spraying

- **DO** place signage indicating area is closed or out of service
- **DO** ensure no bystanders are present
- **DO** address any ventilation concerns (i.e., avoid confined spaces with poor ventilation)
- **DO** ensure food or food related items are removed from space and any food contact surfaces are rinsed with potable water post-spray
- **DO** avoid contact with eyes, skin or inhalation while spraying
- **DO** ensure spraying is away from user breathing zone
- **DO** move from sprayed areas to unsprayed areas
- **DO** wear proper PPE (minimally – sealed dust/mist mask/N95 in addition to any required per the SDS)
- **DO** allow for 15-minute resettling time post-spray
- **DO** treat areas with sources of heat, open flames, sparks or other ignition sources with care

DON'TS For Electrostatic Spraying

- **DON'T** spray flammable products – spray only products recommended by ProGuard
- **DON'T** spray electronics or sensitive items unless this application is confirmed with the manufacturer.
- **DON'T** spray directly on people or animals.
- **DON'T** use electrostatic spraying to treat the air.

PRODUCTS AND TOOLS

General Instructions

What products do you need?

Multi-Purpose Disinfectant

What tools do you need?

Electrostatic sprayer, 'Area Closed/ Out of Service' sign, PPE (minimally – sealed dust/mist mask/N95 in addition to any required per the SDS), 'Wet Floor' sign, refillable spray bottles, trigger sprayers, microfiber cloths, vacuum, dust pan/broom, mop pole/pad and bucket, window scrubber/squeegee



Cleaning & Disinfection Frequency _____

Inspection Frequency _____

Responsible _____

Required PPE* _____

*in addition to any required by SDS



To help protect against COVID-19 and other infectious pathogens, ensure treated surfaces remain wet for contact time indicated on product label.

**Refer to product label for use directions*

ELECTROSTATIC SPRAYING PROCEDURE

Cleaning and disinfection guidelines for hospitality

1



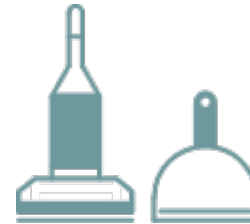
Don required PPE (minimally – sealed dust/mist mask/N95 in addition to any required per the SDS), and place 'Area Closed/Out of Service' signage.

2



Remove trash/debris, linens, food and any ware.

3



Vacuum carpet/entrance mats and vacuum or sweep hard-surfaced floors (tile/wood/LVT).

4



Empty trash cans and recycling bins. Replace liners.

5



Refill air freshener, hand sanitizer and disinfectant wipe dispensers as needed.

6



Remove or cover electronics, high-value items or sensitive surfaces.

7



Pre-clean visibly soiled areas (e.g., food/drink spills) using **multi-purpose disinfectant**.

8



To disinfect using an electrostatic sprayer, apply **multi-purpose disinfectant** solution to hard, non-porous environmental surfaces.

ELECTROSTATIC SPRAYING PROCEDURE

Cleaning and disinfection guidelines for hospitality

9



Begin spraying area from the farthest corner ensuring no more than 2 feet (60 cm) between the spray nozzle and the surface. Be aware of possible overspray.

10



Ensure treated surfaces remain wet for contact time indicated on product label. Allow spray to settle for 15 minutes before re-entering the area.

11



Wipe surfaces (recommended) or let air dry. For electronics, spray a cloth and wipe surface.

12



Clean glass and windows by spraying **multi-purpose disinfectant** or glass cleaner on a fresh microfiber to ensure a streak-free finish.

13



Mop hard-surfaced floors (tile/wood/LVT) to remove overspray or settled product.



NOTE: Ensure spraying is always away from user breathing zone and movement is from sprayed areas to unsprayed areas.

Refer to product labels for complete directions for use.

Specific Touchpoints

- Doorknobs/pushplates
- Hand railings
- Handles
- Water fountain push plates
- Elevator/escalator
- Chair armrests
- Reception/concierge desks
- Countertops/tables
- Faucets/sinks
- Fitness equipment/weights
- Luggage carts
- Bellhop stand

Electronic Touchpoints*

- Elevator buttons
- Light switches
- Thermostat
- Keyboard
- Computer mouse
- Remote control
- Phones
- Touchscreens
- ATMs

List is not exhaustive – assess your facility for additional touchpoints.



**For more information contact your
ProGuard Representative at 866-444-7450**