

LONG TERM AND ACUTE CARE INFECTION PREVENTION

Cleaning, Disinfection and Hygiene

GENERAL GUIDELINES

- Follow local public health recommendations related to local infection activity and need for isolation and closing.
- Reinforce personal hygiene (hand hygiene and cough etiquette) throughout your operation.
- Provide hygiene materials such as tissues and hand sanitizer stations.
- Stock applicable disinfectant products (check with your ProGuard representative for a list of products).
- Closely monitor employee health. Encourage symptomatic employees to stay home.



SPECIFIC GUIDELINES FOR PROCEDURAL IMPLEMENTATION

RESIDENT ROOMS

- Provide masks as directed for employees and infected individuals.
- Thoroughly clean and disinfect all hard surfaces per infection control protocol.
- Provide individual hand sanitizer or hand sanitizer stations in public areas.
- Room cleaning should be performed frequently to minimize spread of infection and employee risk.
- Isolate symptomatic patients and follow public health recommendations for infection control.

FOODSERVICE

- Provide alcohol-based hand sanitizer stations.
- Increase cleaning and disinfecting frequency for high-touch surface areas.
- Consider offering in-room meal delivery only.

RESTROOMS

- Clean and disinfect public restrooms more frequently as specified on the product label.
- Provide alcohol-based hand sanitizer stations just outside of public restrooms.

PUBLIC AREAS

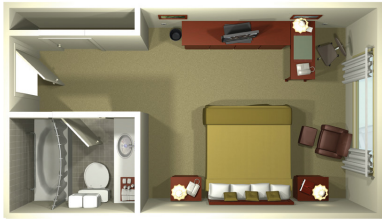
- Increase cleaning and disinfection frequency, especially for surfaces frequently touched by residents, patients, guests and employees.
- Provide hand sanitizer stations in high traffic areas.
- Public restrooms should be cleaned and disinfected per infection control protocol.
- Consider limiting non-essential visitors; restrict entry of symptomatic visitors or those who have been exposed. Post signs regarding restriction.
- Consider closing non-essential public gathering areas.

EMPLOYEES

- Closely monitor employee health. Reinforce personal hygiene and cough etiquette. Encourage symptomatic employees to stay home.
- Identify critical staff members and functions – develop a business continuity plan. Consider the ability for employees to work from home.
- Provide hand sanitizer stations, Ready to Use (RTU) disinfectant spray or wipes, and tissues for employees from list provided by your ProGuard representative.
- Have employees disinfect all personal hard surfaces referenced on the product label.
- Educate and inform all employees of infection status and proper infection control procedures.

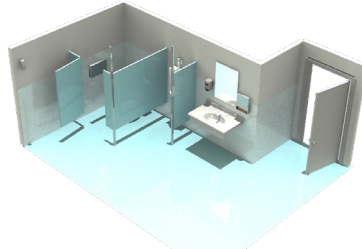
LONG TERM AND ACUTE CARE
INFECTION PREVENTION
Cleaning, Disinfection and Hygiene

SPECIFIC TOUCH POINTS



RESIDENT OR PATIENT ROOMS

- Door handles
- Desk, table, chairs and lamps
- Dresser drawer handle
- Light switches and thermostats
- Drapery pull handles
- Mini-bar, menu and room collateral
- Telephone and keypad, remote control keypad and alarm clock
- Television
- Safety latch and peephole
- Trash receptacle touch points
- Iron handle, hangers, and luggage rack
- Faucet and toilet handles



PUBLIC RESTROOMS

- Door handles
- Sink faucets and toilet handles
- Towel dispenser handle
- Soap dispenser push plates
- Baby changing station
- Trash receptacle touch points



PUBLIC AREAS AND FOOD SERVICE DINING ROOM

- Door handles, push plates, thresholds and hand railings
- Tables and chairs
- Coffee and beverage stations
- Vending and ice machines
- Public information kiosk
- Trash receptacle touch points
- Telephone and keypad



BACK OF THE HOUSE

- Door handles and push plates
- Handles of all the equipment doors and operation push pads
- Handles of the dispensers (beverage, etc.)
- Ice scoops
- Walk-in and other refrigerator handles
- Walk-in refrigerator and plastic freezer curtains
- Freezer handles
- 3-compartment sink and mop sink
- Handwashing sink handles
- Soap dispenser push plates at handwash sink
- Towel dispenser handle at handwash sink
- Trash receptacle touch points
- Cleaning tools
- Buckets
- Telephone keypad and hand set
- Manager's computer

